



SWITZERLAND

CANARY-YELLOW PLUMAGE

Kindergarten Spittel, Affoltern am Albis

LOCATION: Mühlebergstrasse 34, Affoltern am Albis CLIENT: Primarschule Affoltern am Albis

ARCHITECTS: Illiz Architektur GmbH, Zurich/Vienna GENERAL PLANNER: Pöyry Schweiz AG, Zurich

BUILDING PERIOD: 2013/14 FAÇADE CONSTRUCTION: Markus Schnider, Bonstetten

FAÇADE MATERIAL: Swisspearl® SMALL FORMAT, PLANEA Yellow P 613 and P 616, Beige P 812, White P 113

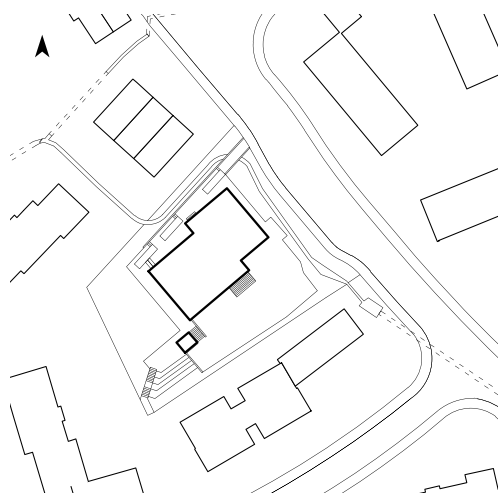
In the course of renovating and adding a story to a kindergarten built in 1968, the commissioned architects from Büro Illiz lent the structure a powerful presence and identity with an external skin of longitudinal façade tiles in rhythmic colors.

FRANK PETER JÄGER The Spittel Kindergarten in Affoltern am Albis no longer met the Canton of Zurich's current guidelines for school buildings. These guidelines demand that every main space be assigned a smaller group space. In addition, the building from 1968 did not have sufficient working spaces for the teachers, and no spaces for materials. The one-and-a-half-story structure was furnished with a simple, quite attractive brick façade typical of its era, with exposed concrete ribbons on the attic and window fronts. The substance was well preserved, which is why the client decided to renovate and expand the existing building.

The Büro Illiz Architektur from Zurich and Vienna was awarded the contract. For a number of reasons they decided against tying in directly with the existing architecture. The façade of the building, in particular, should feature a minergie standard, which would have been hardly possible without intervention in the existing façade, and visible intersections between old and new. In the search for a façade solution for the insulated building with one story added, Sabrina Mehlan and Petra Schlömer, the architects responsible for

the project, decided on an external skin of horizontally placed, slender Swisspearl façade shingles in the colors: white, light-gray, beige, and canary yellow.

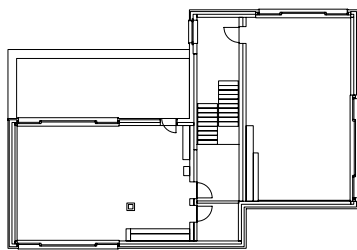
In the extended building, each of the three classrooms has access to an 80-square-meter main space, as well as a group space of 36 square meters. The spaces and internal circulation areas, especially the stairway, seemed aged, cluttered, and somewhat dark. The architects were able to completely change the image of the spaces with surprisingly few interventions, such as a new stairway railing, elegant lighting, and mainly, with color. But rather than yellow and beige, a powerful green and mainly the omnipresent white of the walls, built-in closets, and balustrades define the renovated interior spaces, making them light and airy. In the new upper story, so much use area was created that the



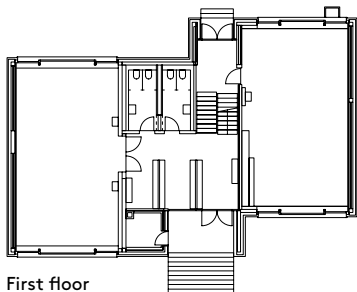
architects were able to expand the two classrooms to the outdoors with a spacious roof-top terrace.

These gaps within the cube fit well into the building's new appearance. Its closed, colorful, shingle texture is broken only by the opening of the entrance; and large, horizontal windows—a building homogeneous in form, heterogeneous in its appearance. Apart from its openings, defining the image of the building are mainly the three different application patterns of the pre-hung slabs.

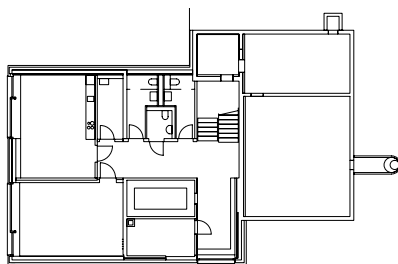
The façade, with its in part flowing color transitions, and in part contrasting juxtaposition, is reminiscent of plumage or the reflection of a lake's waves. Whatever image it may evoke, the architects responsible for the project were concerned with lending the extended building a new suitable identity for the changed cubature and distinguishing it as a public structure within the neighborhood of sober, white plastered residential buildings.



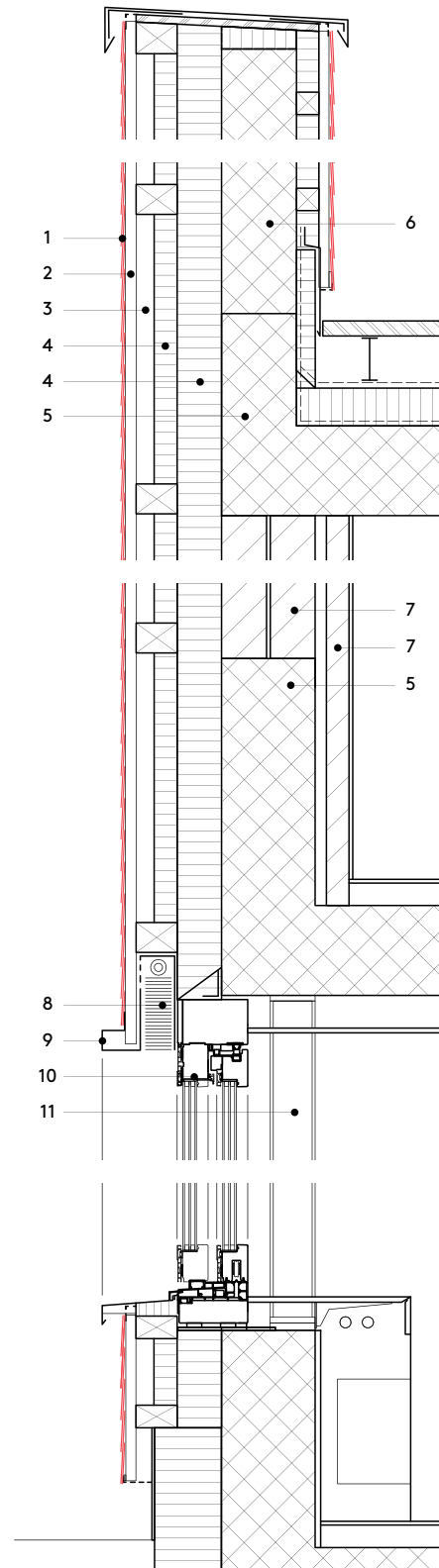
Upper floor



First floor



Basement floor 1:500



Vertical section 1:20

- 1 Swisspearl® SMALL FORMAT panel 4 mm, double layer
- 2 ventilation cavity, vertical timber batten
- 3 batten
- 4 thermal insulation
- 5 concrete, existing building
- 6 concrete
- 7 masonry, existing building
- 8 sun blinds
- 9 window frame
- 10 window timber/aluminum
- 11 steel column



“The goal of coloring the façade was to make the building harmonious with its surroundings and also to strengthen its position within the neighborhood.”

Sabrina Mehlan, Illiz Architektur GmbH

